

# Bidet Seat & Lid Replacement Instructions

This procedure is for the *Novita BH Series (both 90 [elongated] or 93 [Round])* bidet seats.

Before beginning, remove your bidet seat from the toilet but shutting off the water, drain the toilet tank, remove the water hose to the bidet seat and, using the release button on the electric cord side, gently pull the bidet seat body off the mounting bracket. It is not necessary to loosen the nuts under your toilet at all.

Place the unit on a soft surface so as to not scratch the unit while working on it.

1. By hand, pry the lid off the left side of unit.



2. Wiggle and push the lid towards the right to disengage the cam on the right side.



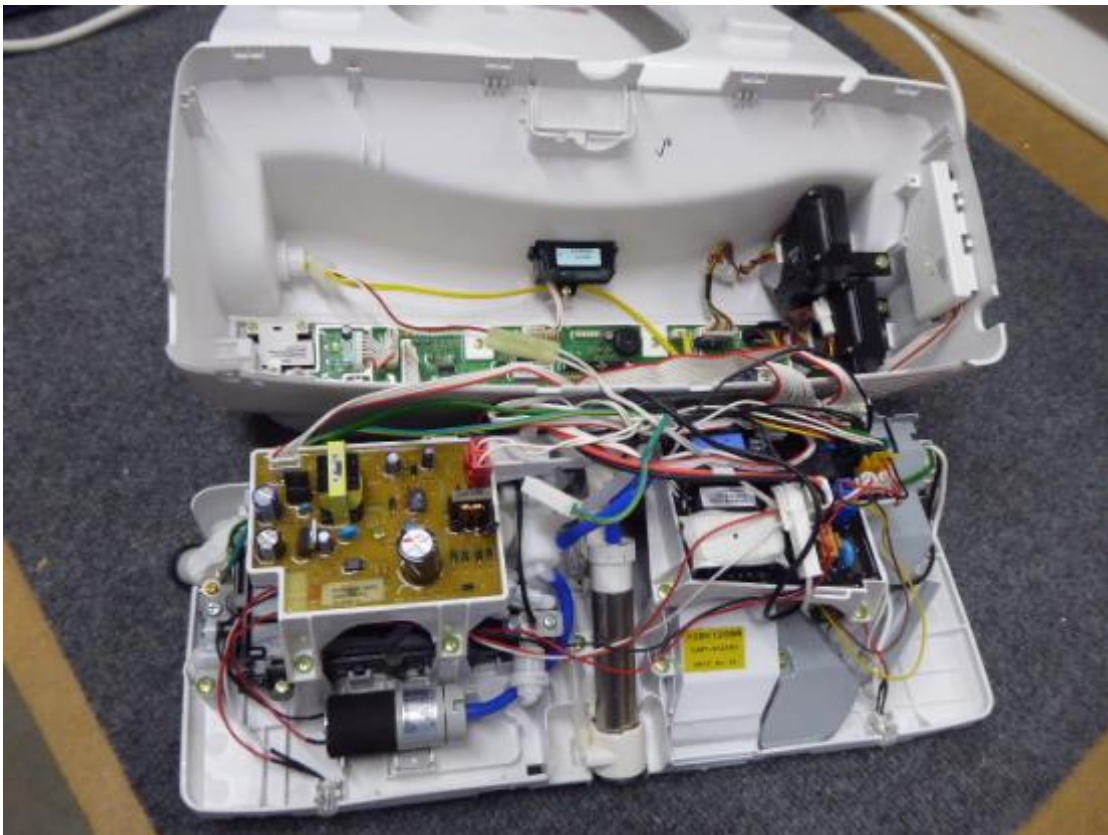
3. Locate and remove the screws on the back of the unit---there are 2 Phillips head screws.



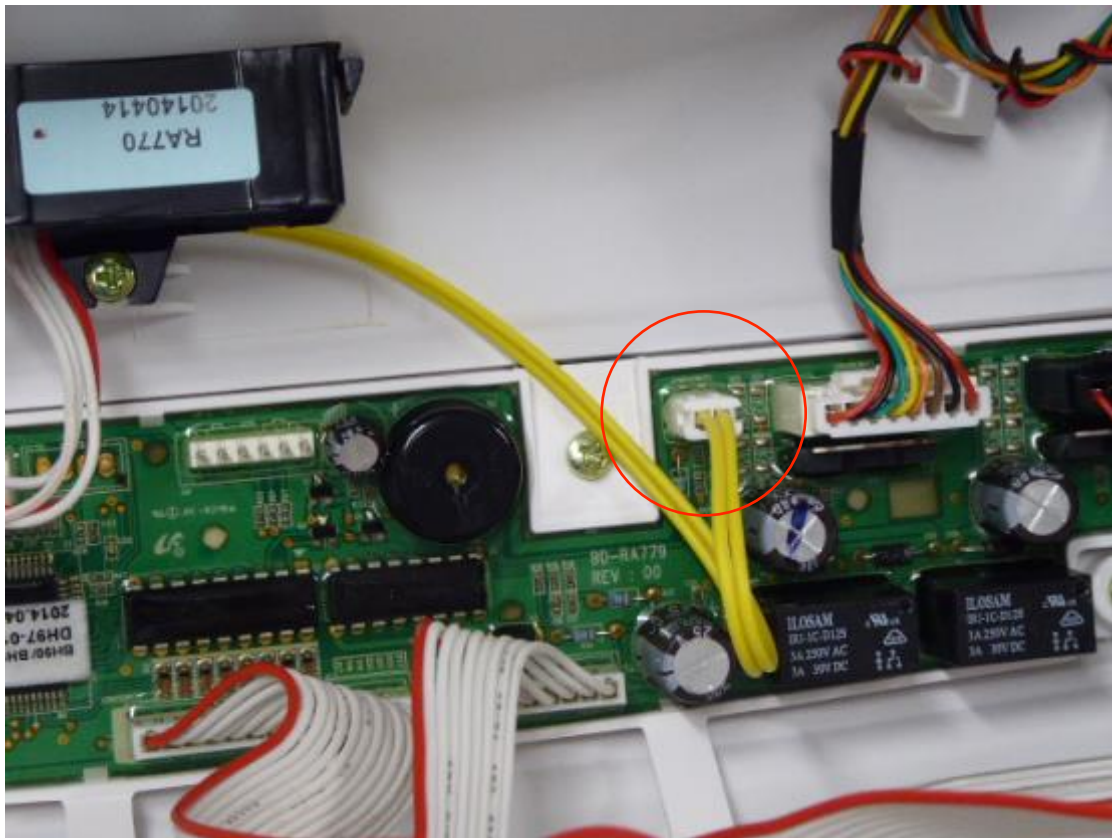
4. Locate the six pry locations in the lower housing. Insert a flat blade screwdriver and gently pry the upper and lower housing apart.



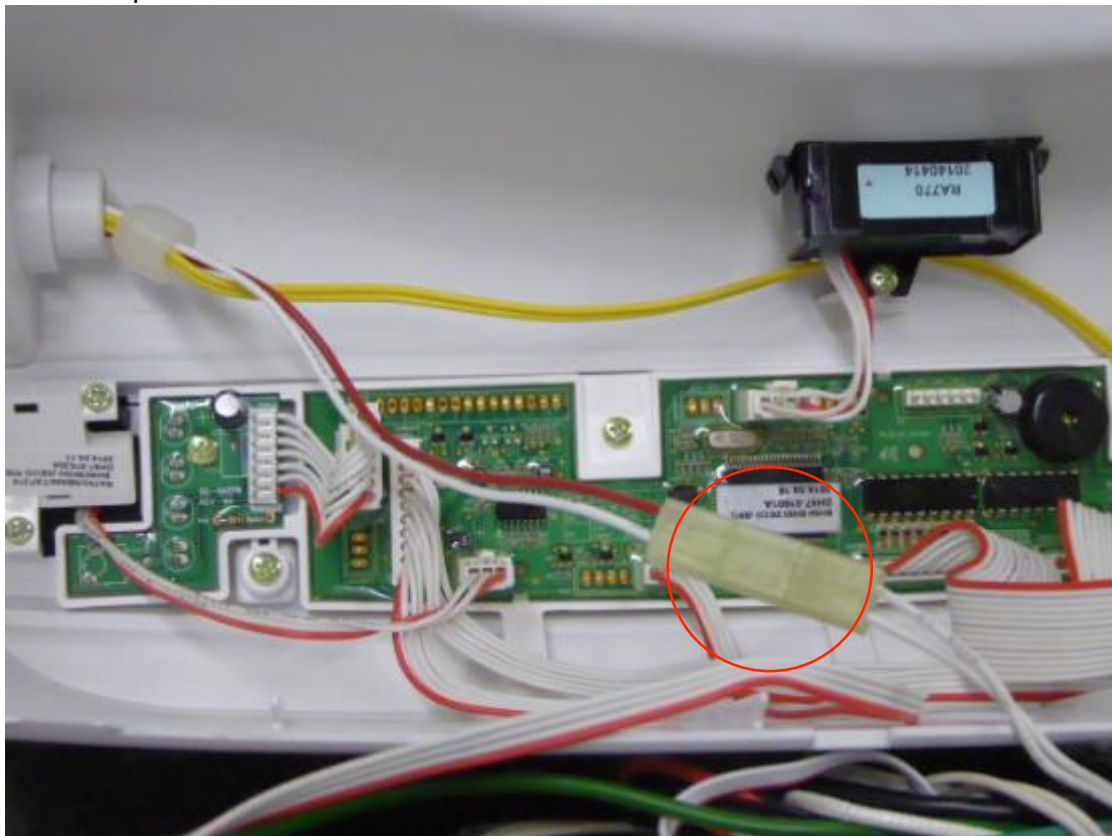
3. Separate the top and lower housings.



4. Unplug the yellow seat wire from the pc board.



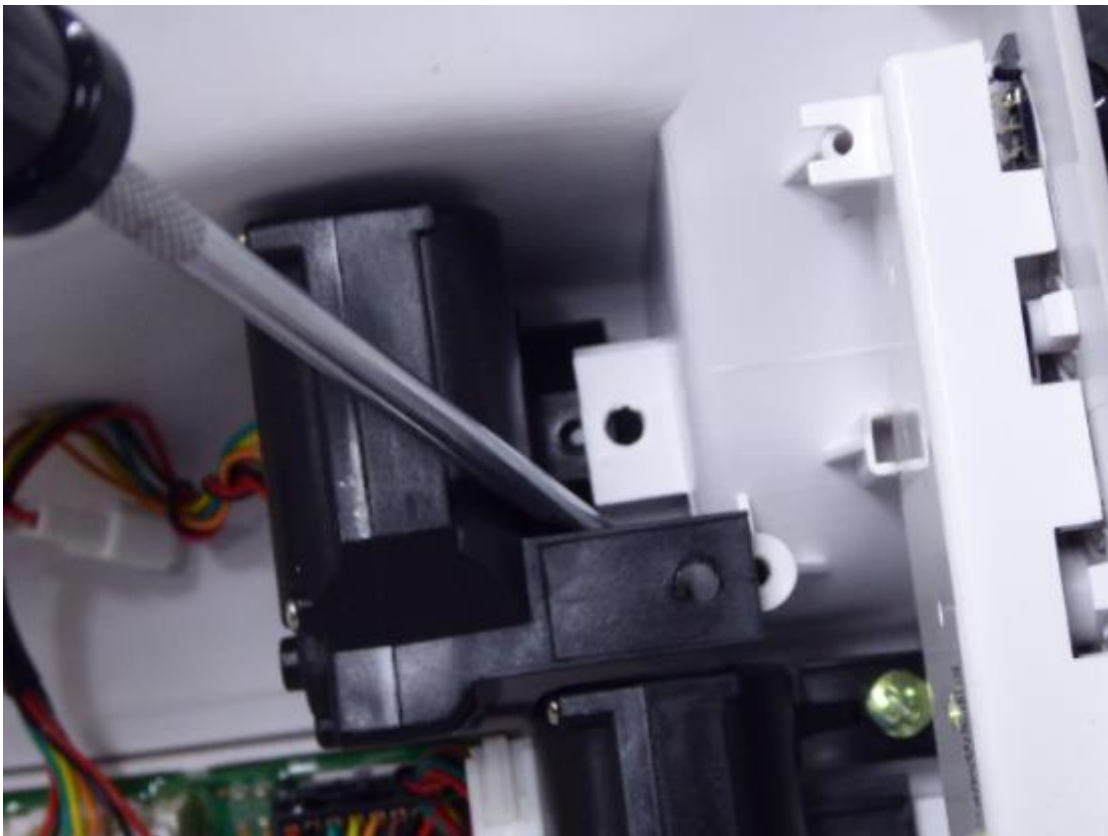
5. Separate the red and white wire connector.



6. Remove the two Phillips head screws that are holding the seat hinge/motor in.



7. Using your screwdriver, wiggle/pry the hinge/motor out of position.



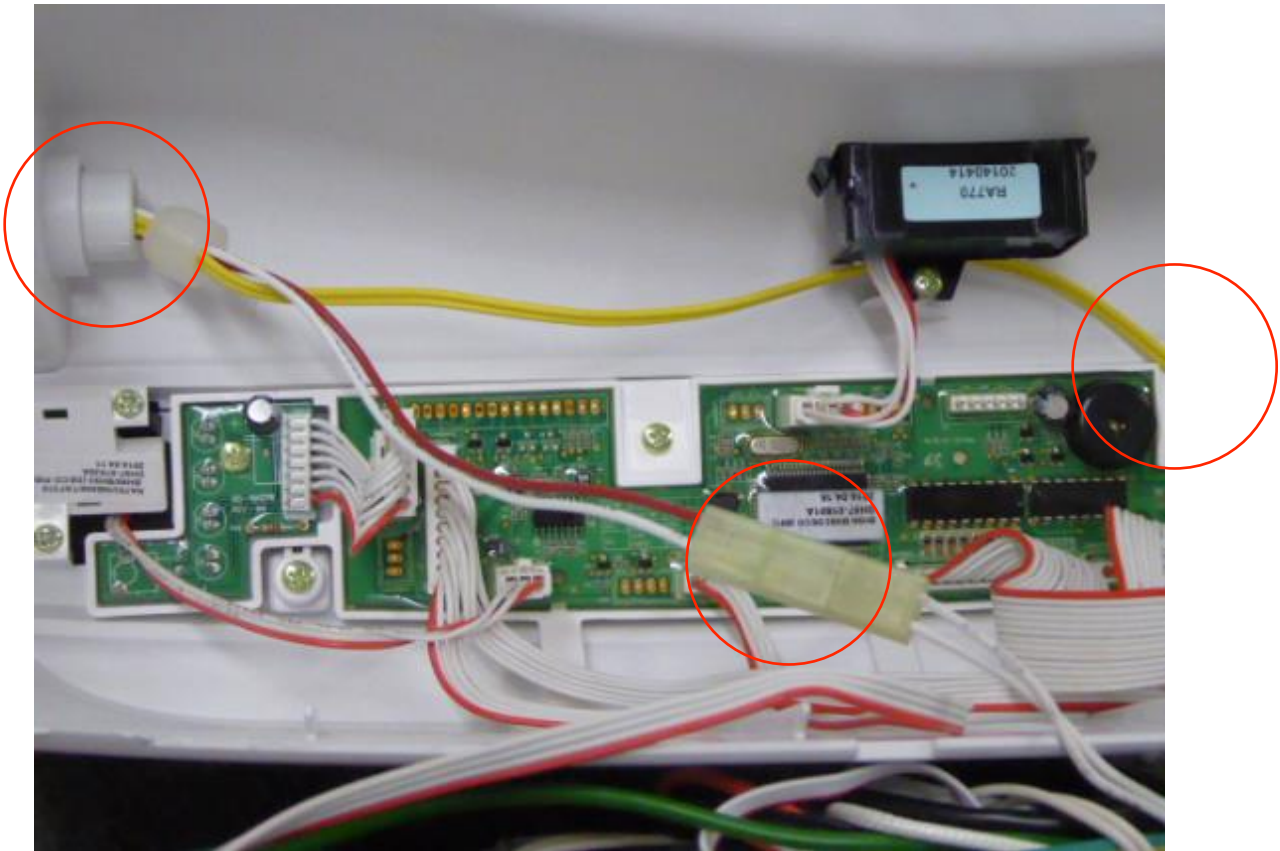
8. Note the hinge pin is a cam (oblong) shape and must match up with the bushing on the seat when reinstalling.



9. The seat can now be removed by pulling the opposite hinge out of the lowering housing. This is the hinge that will have the wires sticking through the hole.

(No Image)

10. Now insert the new seat (wires first) through the “non-motor” side and then wiggle the seat pin into the upper housing. Reattach the red/white connector and the yellow wire plug.



11. Align the seat bushing with the hinge/motor hole and insert the black hinge/motor (the reverse of step 7). This is the trickiest part of the assembly, just be patient and wiggle the black hinge/motor when you think you have it lined up.

12. Reinstall the two Phillips head screws in the hinge/motor assembly. (Reversing Step 6)

13. Take the new lid and check to see if you need to reuse the bushing from your original lid and the bumper as shown here.





14. Install the right side of the lid into the cam bushing and manually pull on the left side of the lid until you can insert it back into the upper housing.
15. Put the upper and lower housing back together, making sure not to pinch any wires in the seam where the upper and lower housings come together.
16. By holding the upper housing with one hand and applying pressure on the bottom of the lower housing, you will hear and feel the two housings “click” together.
17. Reinstall the two Phillips head screws on the back of the upper housing.
18. Check the seam where the upper and lower housings meet to assure no wires are pinched and there is a uniform fit.

This concludes the seat and/or lid swap, congratulations!

If you have any questions please call the dealer where you purchased your bidet seat or the Novita service center at 800-681-0753.